

Chairman's Thoughts

A Happy and Healthy New Year to one and all

The Santa Special was well attended by members offering help to set up and run on the day. The morning started off cold, but that didn't deter the drivers from steaming up and ensuring that we were all ready for our first passengers in double quick time. Passengers turned up on time and the day was off to a good start. Peggy served us all with a cooked breakfast in the morning and later a sausage hot pot for lunch.

Once the last train had pulled into the station and the children had been in to see Santa it was time to take everything down for another year. This, again, could not have been easier, with all those present mucking in and giving us time to enjoy tea and cakes before leaving for home. Thanks to our two Santas and all their Helpers for a very enjoyable day.

The Bournemouth Echo turned up at lunch time and took some photos and we got a nice mention in the Echo before the Christmas break.

Our annual Christmas Party went well, with plenty of food for one and all. The raffle was very successful, with Merlin once again winning the handbag he had so kindly donated for the raffle! Thanks, Irene, for supplying the surprise presents at the end.

I believe the Annual Dinner at The Crooked Beam has now been fully booked and should be a very enjoyable evening. Sorry if you have been unlucky and unable to book but it is now very popular with new and old members alike.

The New Year promises to be a busy one with the Polly Rally and IMLEC 2010. We still have some projects to be finished before then, one of them being the unloading lift. Nessa Rouse has kindly donated Ted's hydraulic lift table for the project and when it has been completed we intend to name it after Ted.

The next Committee Meeting is at 7.30pm, Wednesday 13th January 2010 at the Littledown Centre.

Polly Rally Day at Littledown, Saturday 15th May 2010

IMLEC 2010 at Littledown, Saturday & Sunday 3rd & 4th July 2010



Photograph Jean Hodgson

David Martin

Editor's Ramblings

Christmas has come and gone and the Santa outfits have been packed away for another year. Time really does accelerate the older one gets and the list of unfinished projects doesn't seem to get any shorter. I must make a New Year Resolution not to get interested in anything else until all my projects are finished.

Looking back over 2009 we have managed to get a lot done at Littledown. The two new Carriage Sheds are finished, although we need to find a solution to the condensation problem inside. They look good and blend in well with the background and Bob's stone portals really finish them off. The next project, already under way, is the unloading lift to make getting heavy locos into and out of owners' vehicles less of a back-breaking task.

Immediately the Santa Run had finished Gordon De La Mere ran a test with his 5" Gauge Rebuilt Merchant Navy to see how many passengers it would pull. The answer was 24, loaded onto six of our bogie trolleys and two of the short ones. An interesting test as it gives us an indication of what sort of loads we can expect at IMLEC 2010 next July. The photograph shows Gordon getting away from the station with load of freezing passengers.

Dick Ganderton



Photograph Alan Hodgson

Editor

Dick Ganderton

'Graskop'

76 Dewlands Road

Verwood, Dorset

BH31 6PN

dick@graskop.demon.co.uk

Tel: (01202) 822701

Secretary

Dave Finn

Tel: (01202) 474599

© 2009 B&DSME. No part of this Newsletter may be reproduced without the permission of the Editor.

B&DSME is a Company Limited by Guarantee. Registered in England. Number 3351832

16mm Update

We wish all our readers 'A Healthy and Happy New Year'.

At this time of the year most 16millers are busy overhauling their existing stock or, if Father Christmas has been good to them, building new locomotives, rolling stock, or line side buildings in the warm, but we at Littledown are made of hardier stuff. Although we will not be running on the first Sunday in January 2010, as it clashes with our local Somerset & Dorset Group meet on 3rd January. It is our intention to honour our commitments to run at Littledown on the first and third Sundays of every month, weather permitting, of course.

Some of you will have noticed a new model signal box on the 16mm Garden Railway, complete with full interior detail as you can see in David White's photograph. This model has been kindly donated by Tony Astridge and we greatly appreciate this gesture. Thank you Tony.

See you all at Littledown.

David White & Gordon Miles



3 1/2" Gauge Open Day

I am planning an Open Day on Saturday 24th April 2010 at Littledown for 3 1/2" Gauge locomotives owned by B&DSME members.

There are many 3 1/2" Gauge engines in the Society and my hope is that this event will be well supported.

So, if you have a 3 1/2" Gauge engine, make a note in your 2010 diary.

Richard Knott

The Derek Adams Video Library

Lena Adams has kindly donated Derek's collection of VHS videos to the Society to form a library.

I have catalogued the collection and the listing was sent out with the July Newsletter.

Members will be able to borrow up to four videos at a time and keep them for a maximum of four weeks. Collection, by prior arrangement, can be made at the Engine Shed on Wednesdays or most Sundays; from the monthly meetings at Muscliffe; or from my home address.

David White

Annual Dinner

The Annual Dinner takes place on Wednesday 27th January 2010 at the Crooked Beam Restaurant, Jumpers, Christchurch BH23 2HA. 7.00pm for 7.30pm. This year the limited number of places have all been taken up very quickly, making my life a lot easier.

Dick Ganderton

For Sale

Some of the contents of the late Ted Rouse's workshop equipment is still available, including a 3 1/2" Cromwell Toolroom Lathe, fully equipped on a bench stand, Pillar Drill, Arc Welder, 4 1/2" Vice, etc. Contact Dick on 01202 822701 or e-mail dick@graskop.demon.co.uk for more details and to arrange to view.



For Sale

Peter Lejeune has decided to sell both of his 3 1/2" Gauge locos as he is now finding it difficult to lift heavy weights. The locos are LBSC's *Hielan Lassie* LNER Pacific built by the late Ted Rouse and LBSC's *Netta* LNER 0-8-0 goods loco. The asking price is £1,500 each. Both have current Hydraulic Certificates. Peter has indicated that he would like the *Hielan Lassie* to go to a B&DSME member, if possible. Contact Peter by e-mail at trainman1933@msn.com or telephone **01929 424650**.

Coach Outing - 2010 London Model Engineering Exhibition

A coach has been booked to the London Model Engineering Exhibition at Alexandra Palace on Sunday 24th January 2010. Leaving Littledown at 8.00 am, it will pick up at Meeting House Lane, Ringwood at 8.10 am. The coach fare will be £14.00 for adults and £7.00 for under 16s. That's the same price as for the 2009 trip!

Mike Mortimer is taking bookings, give him a call on **01202 672613** and book your seats early.

Model Engineering Events

22nd - 24th January 2010

London Model Engineering Exhibition, Alexandra Palace, London N22 7AY
www.londonmodelengineering.co.uk/

13th & 14th February 2010

Model Railway Exhibition, Gartell Light Railway, Templecombe, Somerset.
10.00am to 5.00pm Saturday, (4.00pm Sunday). Our 16mm NG members will be there with their *Pigeon Bottom* layout and the Gartell LR will be running a train service.

Direction of Running

Sunday	3 rd January	Clockwise	Wednesday	6 th January	Anticlockwise
Sunday	10 th January	Anticlockwise	Wednesday	13 th January	Clockwise
Sunday	17 th January	Clockwise *	Wednesday	20 th January	Anticlockwise
Sunday	24 th January	Anticlockwise	Wednesday	27 th January	Clockwise
Sunday	31 st January	Clockwise	Wednesday	3 rd February	Clockwise
Sunday	7 th February	Clockwise *	Wednesday	10 th February	Anticlockwise
Sunday	14 th February	Anticlockwise	Wednesday	17 th February	Clockwise
Sunday	21 st February	Clockwise *	Wednesday	24 th February	Anticlockwise

* denotes 16mm Garden Railway open - weather permitting.

B&DSME Diary Dates

7 th January 2010	Tech-Chat (Informal Discussion Meeting); 7.00 for 7.30 pm. <i>Gordon Miles. Please let Gordon know if you are attending.</i>
20 th January 2010	Monthly Meeting; 7.30 pm. Muscliff Community Centre. <i>Kevin Patience, Underwater Salvage.</i>
27 th January 2010	Annual Society Dinner. The Crooked Beam Restaurant, 2, The Grove, Christchurch BH23 2HA. <i>Dick Ganderton, 01202 822701 or by e-mail: dick@graskop.demon.co.uk</i>
4 th February 2010	Tech-Chat (Informal Discussion Meeting); 7.00 for 7.30 pm. <i>Venue to be decided.</i>
17 th February 2010	Monthly Meeting; 7.30 pm. Muscliff Community Centre. <i>Phil Hosey, Air Safety & Accident Investigation.</i>
13 th March 2010	Tech-Chat (Informal Discussion Meeting); 7.00 for 7.30 pm. <i>Venue to be decided.</i>
16 th March 2010	Monthly Meeting; 7.30 pm. Muscliff Community Centre. <i>Richard Knott's Annual Video Show.</i>

Luscombe Valley Happenings

www.luscombevalleysteam.com

Cobweb Run	April 17th 18th.
Summer Gala	July 24th & 25th.
Autumn Run	September 4th & 5th.
Humbug Day	December 18th

2010 Annual Subscriptions

Mike Mortimer will be collecting Annual Subscriptions at the January Meeting. So bring your cheque book with you. Subscriptions are still £20 or £21 for you and your partner. If you want to post your cheque, Mike's address is 18, Collwood Close, Fleetsbridge, Poole, Dorset BH15 3HF.

Newsletter By E-mail

If you want to receive your copy of the Society's monthly *Newsletter* as a .pdf file, in full colour, you **must** let Dick know, by e-mail, sent from the computer you want to receive it on.

Typeset by Dick Ganderton in Gill Sans using Adobe InDesign CS v3.0.1 on an Apple Macintosh Dual 2.5GHz PowerPC G5 running Mac OS X v10.4.11 Tiger.

Dick Visits GEARS 2009

Part 3

I mentioned the V8s in various stages of construction last month but there wasn't room for a photograph of the superb workmanship that goes into the machining of the intricate components of one of these engines. So the first photograph this month is of some of these parts by Dwight Gilles.

There were some nice examples of machine tools on show including the usual Quorn Tool & Cutter Grinders, various George Thomas designed attachments and a model back geared, screwcutting lathe by Ralph Milam of Algoma, Washington.

William Bartram from Albany, Oregon, had his unusual design of opposed piston engine, seen in the photograph below right. When it's running the action of the levers and cranks is fascinating to watch.

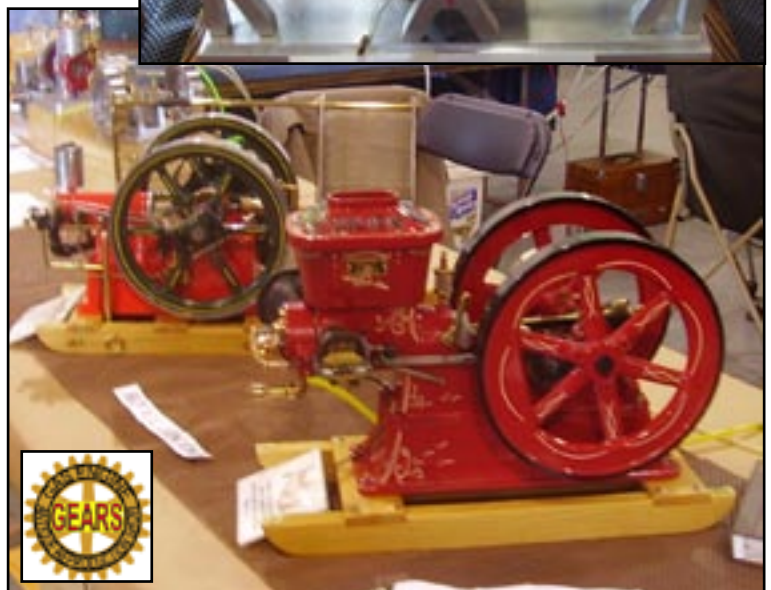
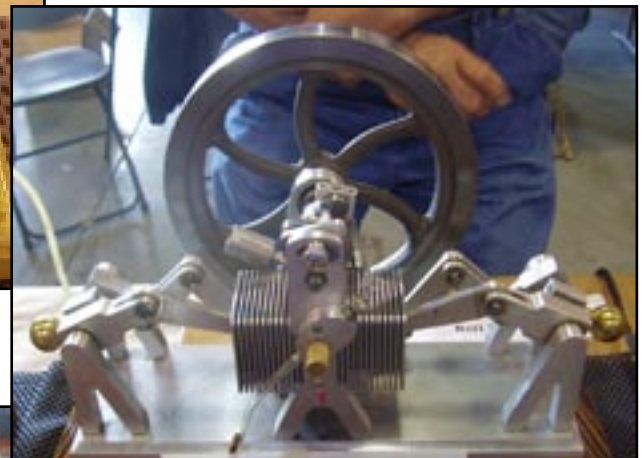
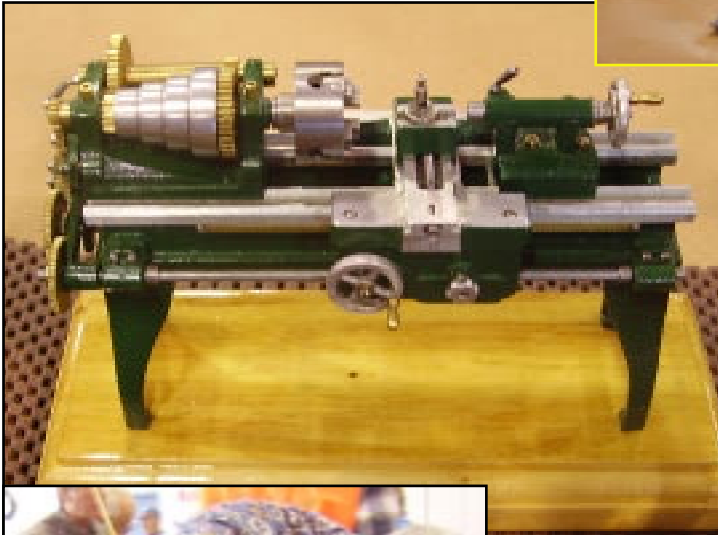
The picture at the bottom left shows Larry Smith making some running adjustments to his 1/4 scale model of a Westinghouse 3-phase AC generator and power control panel.

The last picture is of more of Ralph Milam's work. The red engine with the elaborate paint scheme is *Julien*, a 1/3 scale model of a 5 HP gas engine. Behind it is Ralph's 1/4 scale version of a 1906-1917 International Famous 4 HP, screen-cooled, hit & miss engine.

The show was supported by several trade stands, including a couple of traders outside with a variety of 'pre-owned' tools of all sizes. Neil Knopf, Editor of *Live Steam* was there, as was Mike Rehmus, Editor of *Model Engine Builder*.



One intriguing stand was the newly opened Portland TechShop. This is a large membership-based workshop giving access to tools, equipment and instruction, including some of the latest technology such as 3-D printing, laser cutting and CNC.



All photographs by Dick Ganderton

