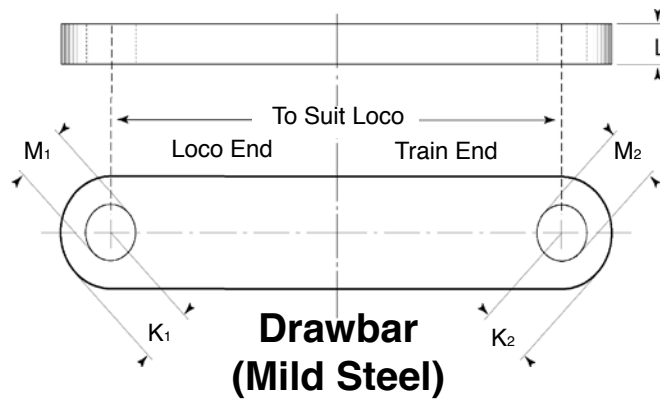
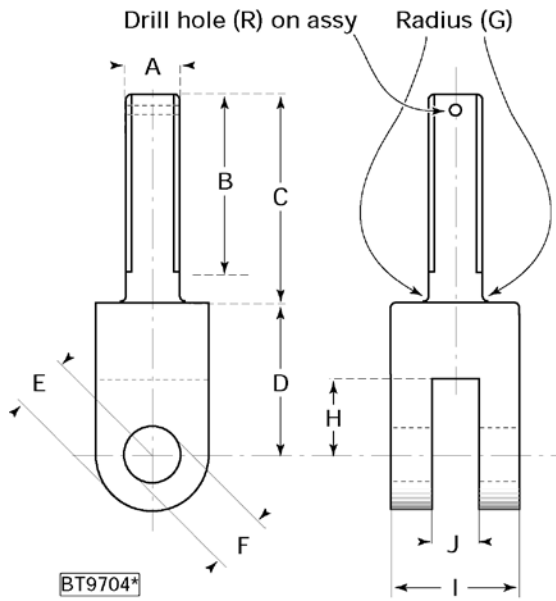


Recommended Couplings

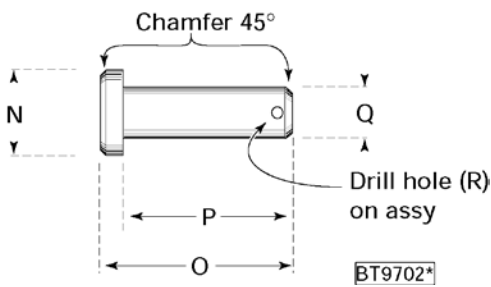
v5 March 2014



Drawbar (Mild Steel)

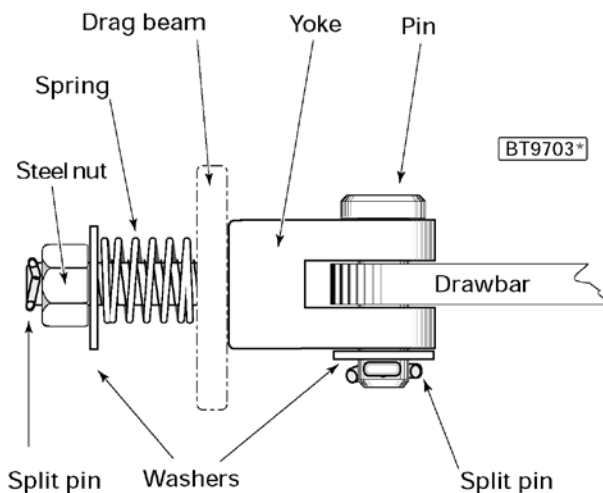


Coupling Yoke (Mild Steel)



Drawbar Pin (Silver Steel)

		3 1/2"	5"
A	Thread	2BA	1/4"BSF
B		1/2"	3/4"
C		3/4"	1"
D		3/8"	5/8"
E	Radius	3/16"	5/16"
F	Hole	3/16"	1/4"
G	Radius	1/32"	1/16"
H		1/4"	3/8"
I		3/8"	5/8"
J		3/16"	1/4"
K1	Radius	3/16"	5/16"
K2	Radius	5/16"	5/16"
L		5/32"	3/16"
M1	Hole	13/64"	17/64"
M2	Hole	17/64"	17/64"
N	Diameter	5/16"	7/16"
O		21/32"	1"
P		9/16"	7/8"
Q	Diameter	3/16"	1/4"
R	Hole	3/64"	1/16"



General Assembly of Recommended Coupling

TEX

The coupling bar for a 3 1/2" gauge loco will be narrower at the loco end. It can either be stepped or tapered, but it should be 5/8" wide at the train end.